

N.W. COR. N.E. 1/4  
SEC. 22, T.6 N., R.1 W.

9<sup>TH</sup>

ST.

SECTION LINE S. 89° 53' 03" E.  
S. 89° 28' 50" E. 150'

PART OF N. E. 1/4 OF SECTION 22, T.6 N., R.1 W., S.L.B. & M.  
**ROLLING HILLS ADDITION NO. 2**

IN OGDEN CITY

SCALE: 1" = 50'

CENTRAL WEBER SEWER  
IMPROVEMENT DISTRICT

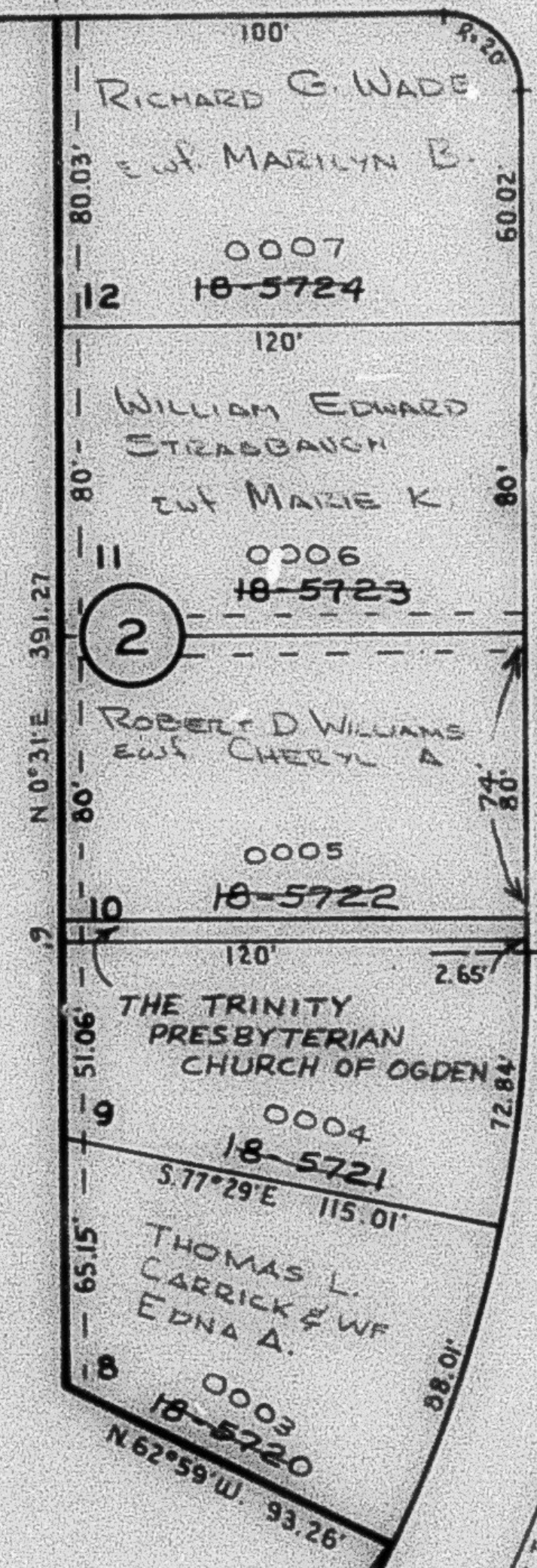
TAXING UNIT: 25

BLOCKS 1 & 2

PREFIX: 13-047

FILLMORE AVE.

STOWE

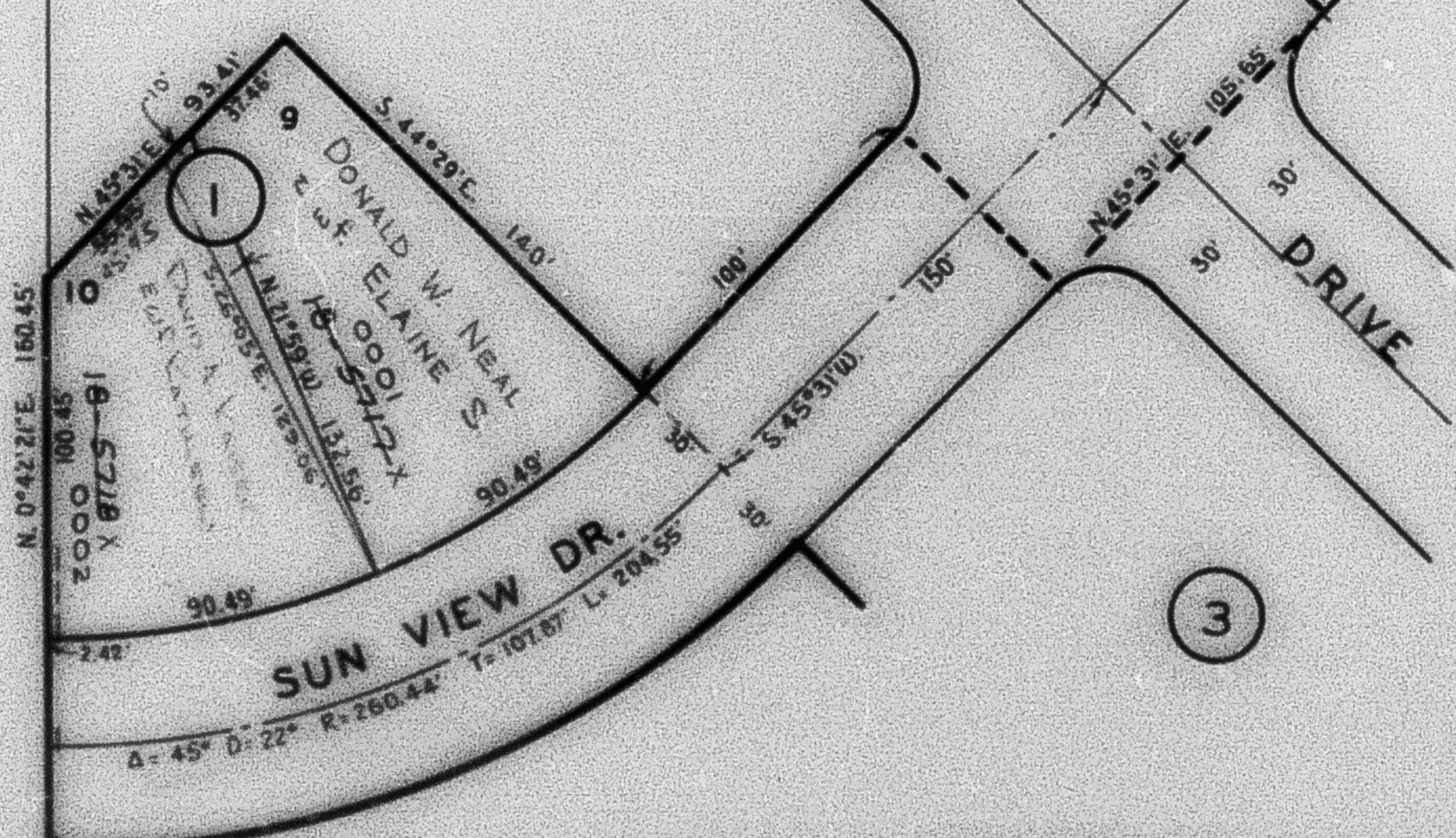


SEE P. 46

5  
SEE PAGE 50

4

NOTE:  
FOR COMPLETE ENGINEERING DATA,  
SEE ORIGINAL PLAT BOOK 10, PAGE 55



SEE PAGE 48

3